

Netlogger WEB Analysis

Company Snapshot

Unispeed A/S was established in 1999 and has rapidly become a market leader in Network Packet Sniffing and Analysis. The essence of our work is IT security, speed, scalability, reliability and user friendliness - all these features and values are built into our products

Unispeed A/S has developed solutions to handle the tough requirements of the busiest networks in the world. Some of the worlds leading internet players already use and benefit from our products.

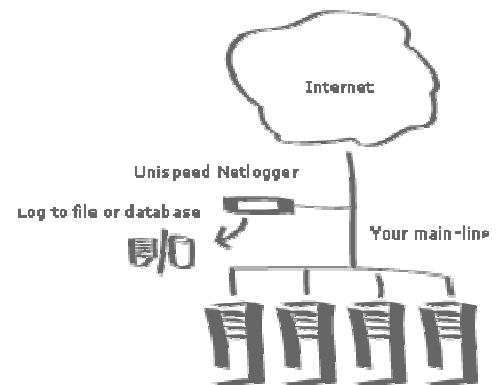
Unispeed A/S has earned a reputation of producing high quality equipment for interception and collection of data for network analysis, server performance and data logging for fast and secure data recovery - providing the highest level of network integrity and stability.

System Overview

The Unispeed Netlogger is essentially a network sniffer which depending on the version is capable of collecting data from a copper or fiber network, facilitating mirrored traffic being collected from up to 6 network interfaces.

The Unispeed Netlogger is a hardware platform capable of collecting up to 6 Gbit/s of packed traffic without being detectable on the network "second to none".

An analytic tool set comprising more than 50 tools is incorporated in the system allowing it to do real time data analysis as data passes.



The Netlogger WSAE can be programmed to collect and record traffic for:

- Transition: Customer behavior on the web site, analyzing how the customer moves through the sites pages, where they drop out and why.
- Coverage and double coverage
- Page entry: Where did the customer come from (which link)
- Micro optimisation: real-time analyse how changes to the web site effects sales completion
- Customer profiling: React to customers need geographically, bandwidth, screen resolution, return rate of customer, all without the need for cookies
- Availability: Alert maintenance and sales functions if server or network response time exceeds desired limits (SMS or E-mail)

UNISPEED A/S
Engvej 139
DK-2300 Copenhagen S
Denmark

Phone: +45 33 44 55 00
Fax: +45 33 44 55 01
E-mail: sales@unispeed.com
www.unispeed.com



- Web statistic and analysis enging

Netlogger WEB Analysis

Unique possibilities

Unispeed A/S offers your company an unique possibility to Track your costumers, and immediately Respond to their needs.

Real time Evaluate your web performance, and Provide the statistics for improved return on investment.

Upgrades

Unmatched processing capability of the Netlogger enables you to upgrade a single platform to serve all your networking needs

NDFC

- firewall and IDS optimization

NMAE

- ad hoc trouble shooting and network management

SPTB

- traffic billing and billing watch

HSDC

- critical data logging for law full interception and forensic evidence

Unispeed WSAE offers costumers the following unique features compared to other methods

No installation on servers or integration with existing software necessary secures trouble free network performance

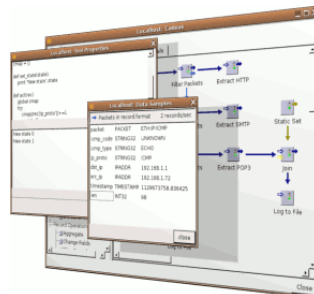
- Determine whether a hit is to be considered a page impression without tagging the page
- Takes off load from servers up to 20% on NT, 15% on Apache, thereby improving network speed and integrity
- Increased web site speed by offloading servers and adjust web site presentation to customer limitations i.e. limit graphics if customer has low bandwidth
- Centralized logging of data even for the largest networks, enables improved data recovery in case of network or hardware failure
- Centralized analysis in real time from several servers and data centres
- Customised visualisation or platform for any visualization tool
- Integration with foreign systems via plug ins, Netlogger API and other means

For statistical purpose the Netlogger can be set to:

- Visualize traffic volume changes over time
- Understand resource usage and identify unwanted trends
- Determine the volume of traffic of individual types



Output from the Netlogger can be stored on the internal hard disk or output to any common used databases, from where data can be visualized by Unispeed custom build tools or third party visualization tools.



- **From the Netlogger Workbench you can control several Netloggers.**
- **Any aspect of your web can be analysed from a single location**

UNISPEED A/S

Engvej 139

DK-2300 Copenhagen S

Denmark

Phone: +45 33 44 55 00

Fax: +45 33 44 55 01

E-mail: sales@unispeed.com

www.unispeed.com