



# Unispeed Blue Shield

- World leading data retention and lawful interception solution

# Conform to Danish and International anti-terror legislation

Unispeed Blue Shield is a complete Anti-Terror logging solution, which guarantees Internet Service Providers (ISP's) can conform to the Danish logging legislation of 28<sup>th</sup> September 2006, and legislation no. 545 of 8<sup>th</sup> June 2006 §15, subsection 1, re: technical equipment arrangements and surveillance assistance to the police in connection with interventions in the communication secrecy.

In other countries, e.g. Great Britain and Italy, few system parameter adjustments, will ensure observance of the European Parliament directive 2006/24/EF of 15<sup>th</sup> March 2006.

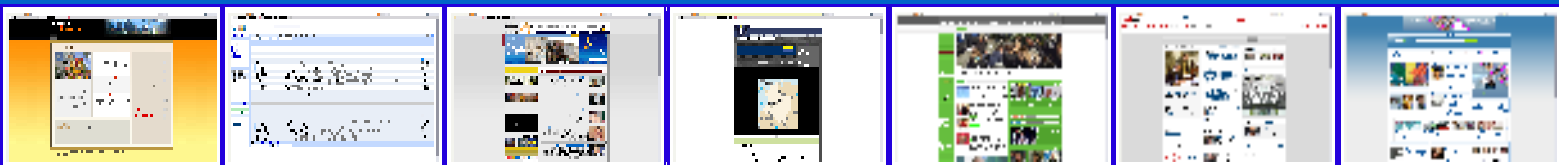
The European <sup>1)</sup>ETSI and the American <sup>2)</sup>CALEA standard is followed in both call data retention <sup>3)</sup>IRI and IP packet content <sup>4)</sup>CC

<sup>1)</sup>ETSI=European Telecommunications Standards Institute

<sup>2)</sup>CALEA=Communications Assistance for Law Enforcement Act

<sup>3)</sup>IRI=Intercept Related Info

<sup>4)</sup>CC=Content of Communication



# Problem-free and cost efficient implementation

Unispeed Blue Shield consists of several proven components with flexible standard interfaces, which enables us to fully customize the solution with minimum efforts.

Besides the basic functions for data logging, operations and surveillance – a range of additional functions such as easy integration to existing customer systems, user administration, and general traffic statistics/analysis are offered.

Intelligent interfaces enables integration with the customers' own surveillance and administration systems, ensuring productivity is achieved.

# No load effects or influence on production systems

Data collection in Unispeed Blue Shield is performed on independent Gigabit or 10 Gigabit line-speed capable hardware units – Unispeed Probes - specially designed for the purpose. The Unispeed Blue Shield will therefore have no influence on existing network units or servers.

The data collection itself will happen in an Out-of-Band architecture resulting in minimal use of band width, and data collection is accomplished without any risk for interruptions in the primary traffic.



# Fault and operation tolerant architecture

---

Unispeed Blue Shield is from the ground up developed with maximum attention on fault and operation tolerance.

A fault tolerance implementation will keep collected data intact, despite hardware fallout on a Unispeed Probe or other circumstances.

In the event of a defect Probe replacement, Unispeed Blue Shield will automatically resume normal operation and empty possible buffers created during the outage.



# Complete centralized surveillance and maintenance

---

Unispeed Blue Shield includes features for monitoring and management of a random number of Unispeed Probes.

All active Unispeed Probes reports operation status to the surveillance module on a regular basis, and in case of critical conditions, configurable alarms can alert the appropriate employees via SMS.

Software updates, configuration and manipulation of Unispeed Probes can be performed via the central management module with full documentation of applied changes.

Alle main functions are protected via the user administration module.



## Unispeed Blue Shield Management

- Continuous updated surveillance of a random number of Unispeed Probes
- Full status provided on all Unispeed Probes
- Configurable alarms
- SMS push of alarms
- Remote servicing of Unispeed Probes
- Configurable commands
- Command queue with full documentation of any changes
- Central management of software updates
- User administration can be integrated via LDAP, MS AD, etc.
- Automatic registration of Unispeed Probes

## Unispeed Blue Shield Data Logging

- Conforms to Danish and International legislation
- Administration of data logging requisitions (HI 1)
- Creation of receipts, status, and alarm notes
- Continuous retention of call data (HI 2)
- Forward logging of data packets (HI 3)
- Reporting to the law enforcement agency (LEA)
- Integration with existing customer databases

## Unispeed Blue Shield add on modules:

- + **Unispeed Blue Shield DHCP – Option 82 Logging**
- + **Unispeed Blue Shield Packet Filtering**
- + **Unispeed Blue Shield Gateway Services**
- + **Unispeed Blue Shield Statistical Traffic Analysis**
- + **Unispeed Blue Shield User Authentication and Billing Services**



Engvej 139 • DK-2300 Copenhagen S • VAT 25457412

Tel +45 3344 5500 • Fax +45 3344 5501 • [sales@unispeed.com](mailto:sales@unispeed.com)